



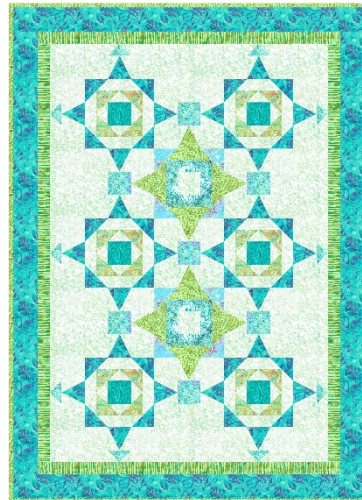
204 – Bahama Blue with Linda Hahn

Bernina sewing machines provided by “The Cotton Cupboard Quilt Shop”

Kit Fee \$20 - Payable to instructor in class - cash preferred. Includes a re-useable foundation piecing stencil, full color handout and enough foundation paper for the project.


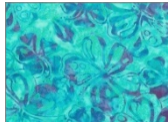
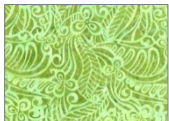




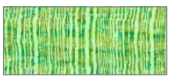

GENERAL SUPPLIES

- Pigma Brush Tip or Chisel Tip Pen
(I will have some in class for optional purchase \$4)
- Neutral color thread for piecing
- Rotary cutter, small square ruler (I use a 9-1/2" square), and a personal cutting mat
- Pins, Scissors, your general sewing supplies
- Fabrics pre-cut and bagged
- Baggie for your scraps
- Scotch tape in case you have an "oopsie"
- Dove Dark Chocolate might be nice ;-)



This is a workshop exclusive design and is not available in any commercial book or pattern.

Bahama Blue Fabric Cutting Chart

FABRIC	SAMPLE QUILT FABRIC	Paradise Bay	FABRIC FOR MY	YARDAGE	PRE-CLASS CUTTING
		SKU 83153-70		2 & 1/2 yards	(3) 14" squares cut in half on diagonal (2) 11" squares cut in half on diagonal (64) 3" x 4" rectangles (12) 3-1/2" squares cut in half on diagonal (136) 2-1/2" squares (2) 4-1/2" squares
		SKU 83150-61		1 & 1/4 yards	(24) 3-1/2" x 4" rectangles (24) 2-1/2" x 4-1/2" rectangles (2) 3" X 43" strips (2) 3" x 55" strips
		SKU 83151-75		1/2 yard	(16) 2-1/2" squares (8) 3" x 4" rectangles (4) 3-1/2" squares cut in half on diagonal
		SKU 83153-7		1/4 yard	(24) 2-1/2" x 4-1/2" rectangles
		SKU 83151-6		1/8 yard	(6) 4-1/2" squares
		SKU 83152-81		1/2 yard	(16) 3-1/2" squares cut in half on diagonal (8) 2-1/2" x 4-1/2" rectangles
		SKU 83154-6		1/8 yard	(8) 2-1/2" squares
		SKU 83154-6		1/8 yard	(8) 2-1/2" x 4-1/2" rectangles
		SKU 83155-7		1/2 yard	(2) 2" x 52" strips (2) 2" x 38" strips
		SKU 83151-7	Your Choice I used Green	1/2 yard	(5) 2-1/2" x WOF strips

My quilt was made using fabrics from the Paradise Bay Collection by Banyan Batiks. I have included the SKU number next to the fabric swatch if you wish to duplicate my quilt. I suggest that you cut a small swatch of the fabric you have chosen for your quilt and paste in the corresponding box above.

